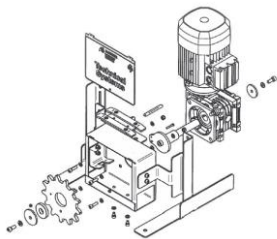


**TSS_CDU_01(00)
Chain Drive Unit Product List**

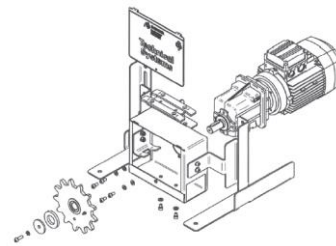
Motor no	Type	kW / Power	I / Gear Ratio	n / Motor Output Speed	Peak Amps	Line Speed (m/min)
TS CDU_1	Worm	0.37	60	23	0.81	13
TS CDU_2	Worm	0.55	25	56	1.20	31
TS CDU_3	Worm	0.75	60	23	1.63	13
TS CDU_4	Worm	0.75	25	56	1.63	31
TS CDU_5	Worm	1.1	40	35	2.39	19
TS CDU_6	Worm	1.1	30	47	2.39	26
TS CDU_7	Worm	1.1	25	56	2.39	31
TS CDU_8	Worm	1.1	20	70	2.39	39
TS CDU_9	Worm	1.5	40	35	3.27	19
TS CDU_10	Worm	1.5	30	47	3.27	26
TS CDU_11	Worm	1.5	25	56	3.27	31
TS CDU_12	Worm	1.5	20	70	3.27	39
TS CDU_13	Worm	2.2	40	35	4.79	19
TS CDU_14	Worm	2.2	30	47	4.79	26
TS CDU_15	Worm	2.2	25	56	4.79	31
TS CDU_16	Worm	2.2	20	70	4.79	39
TS CDU_17	Helical inline	0.37	63.22	22	0.81	12
TS CDU_18	Helical inline	0.55	23.51	60	1.20	33
TS CDU_19	Helical inline	0.75	60.8	23	1.63	13
TS CDU_20	Helical inline	0.75	23.85	60	1.63	33
TS CDU_21	Helical inline	1.1	44.18	32	2.39	17
TS CDU_22	Helical inline	1.1	35.91	39	2.39	22
TS CDU_23	Helical inline	1.1	23.85	59	2.39	32
TS CDU_24	Helical inline	1.1	20.08	70	2.39	39
TS CDU_25	Helical inline	1.5	44.18	32	3.27	18
TS CDU_26	Helical inline	1.5	30.57	45	3.27	25
TS CDU_27	Helical inline	1.5	24.99	56	3.27	31
TS CDU_28	Helical inline	1.5	21.15	66	3.27	37
TS CDU_29	Helical inline	2.2	38.63	36	4.79	20
TS CDU_30	Helical inline	2.2	30.57	46	4.79	25
TS CDU_31	Helical inline	2.2	24.99	56	4.79	31
TS CDU_32	Helical inline	2.2	19.27	73	4.79	40

Gearbox Type:

Worm



Helical Inline



Application

Cages

Floor Systems

Copyright subsists in this document. Any unauthorised performance of restricted acts (as defined in the Copyright Act, 98 of 1978) in respect of this document, including reproduction, publication or adaptation thereof, constitutes infringement of the copyright and may be liable to civil and/or criminal prosecution.